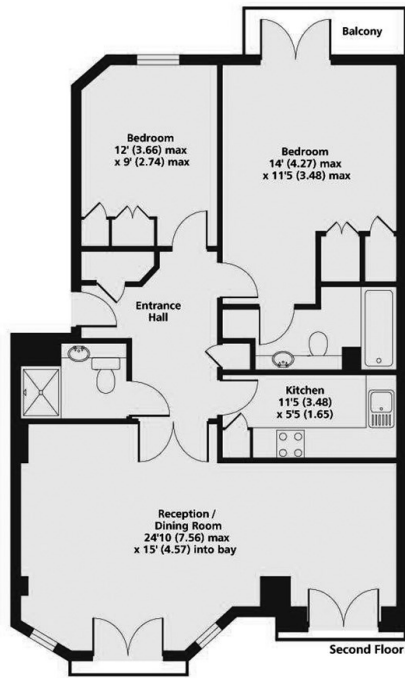


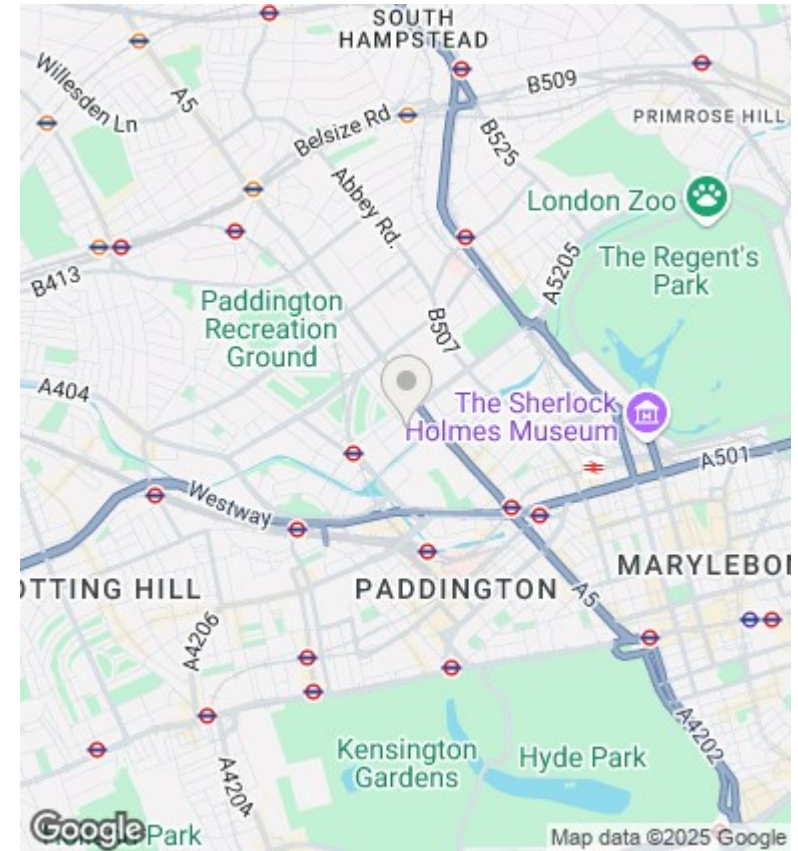
Clarendon Court, Maida Vale, London W9

Reduced £975,000

- Two bedroom
- 843 sqft / 78.3 sqm
- Located In The Heart Of Maida Vale, Moments Walk From The Amenities Of Little Venice
- Long leasehold 974 years
- Two bathroom (1 ensuite)
- Secure Underground Parking
- 24 Hour Portage
- Second Floor
- Situated In A Highly Sought After Period Mansion Block
- Lift Access



Gross Internal Area 843 sq ft 78.3 sq metres



Directions

Viewings

Viewings by arrangement only. Call 02070990800 to make an appointment.

Council Tax Band

G

EPC Rating:

Energy Efficiency Rating		Current	Potential
<i>Very energy efficient - lower running costs</i>			
(92 plus)	A		
(81-91)	B		
(69-80)	C		
(55-68)	D		
(39-54)	E		
(21-38)	F		
(1-20)	G		
<i>Not energy efficient - higher running costs</i>			
England & Wales		EU Directive 2002/91/EC	